



# Test Systems

## Universal Test Gun

The Universal Test Gun is a portable solution used to run test cycles and measure speed, angular position and torque on specific axes. It has been designed with the automotive and aerospace industries in mind, where precise and repeatable testing is the norm. The Universal Test Gun is used to test all types of applications from brake discs residual torque to the force required to close a vehicle's window.

### TEST ENGINEERING

#### TEST SYSTEMS

SOFTWARE

CONSULTING

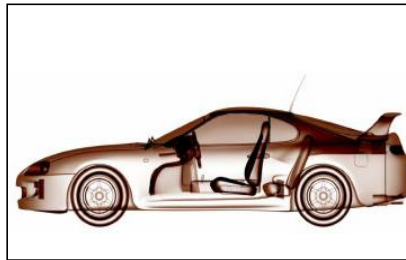
PROJECT MANAGEMENT

SYSTEM COMPLIANCE

TESTS

TRAINING

RETROFIT



## Speed, Angular Position and Torque Testing

### Portable, Light-weight Solution

The power of the Universal Test Gun resides in its compact format. Using a patented integration of hardware and software components, it is transportable and fits in a robust wheeled case! The tool itself has also been designed to be light weighted and particularly easy to handle.

Take the Universal Test Gun on the road! Whether you are testing a specimen in your lab or need to run tests cycles outside of the office on the road, the Universal Test Gun will be there.

### Flexible

Speed, angular position and torque; this unique product tests it all. The integrate touch screen allows the user to visualize the results but also to change test cycles and to validate new standards.

Without any programming skills you can define a new environment. The open architecture of the professional software suite allows the test

system to be easily adapted to any situation.

### Cost Efficient

By standardizing test solutions SDI helps its client lower their costs and manage their expenses. With SDI's product there is no risk of going over budget!

Adaptability of the test system also ensures faster return on investment. The Universal Test Gun is not dedicated to one application only, it is easily adaptable to your future needs.

### Precise and repeatable

Preciseness of your results are guaranteed. The mechanism and sensors of the system are made for high precision measurements without restricting torque.

X'SPARE, SDI's software solution, makes the test cycles repeatable with high fidelity. Precision and repeatability are at your fingertips.



TEST ENGINEERING,  
MECHATRONICS AND  
EMBEDDED SYSTEMS

## Powered by X'SPARE, Controlled by You

X'SPARE professional software suite powers the Universal Test Gun. Thanks to its user-friendly interface, control and execution of test sequences is effortless. The real-time software commands and controls the system and allows adaptation of the system to different products and specifications by the operator. X'SPARE is norm oriented and can automatically generates an analysis of the test results.

- Real-time command /control of test systems
- Complex system control rules are integrated
- Real-time graphical visualization of the results
- Norm-oriented input allows easy and rapid creation of test sequences by the operator

# Technical Characteristics

## Universal Test Gun



This is the original version of the Universal Test Gun. It fits in one industrial case! It is robust and can be used in harsh environments.

The front panel can be designed specifically to your needs to emphasize the information and results you need.

## Touch-Screen Universal Test Gun



SDI's new Universal Test Gun integrates a touch-screen to easily visualize your test results. The same screen can be used to configure your sequence and adapt the system to a new environment or new standard.

This version of the system requires a smaller independent case for the gun.

Case Dimensions (mm)	550x415x290
Gun Weight	3 kg
DC Power Supply	11 – 14 V
AC Power Supply	110 – 230 V
Operating Temperature	0 to 40 °C
Storage Temperature	-30 to 60 °C

T-S Case Dimension	550x415x290
Gun Case Dimension	410x340x410
Gun Weight	3 kg
AC Power Supply	110–230 V
Operating Temperature	0 to 40 °C
Storage Temperature	-30 to 60 °C

### They Trust SDI

With 18 years of experience, SDI has already implemented over 500 test systems in the automotive, aeronautics and defense sectors.

- ROBERT BOSCH - HUTCHINSON -
- EADS - VALEO - SANDEN - LISI -
- FAURECIA - RENAULT - PSA -
- SNECMA - MESSIER BUGATTI -
- VALUTEC - VISTEON - WESTAFLEX -
- TRELLEBORG ....



## General Specifications

<b>Torque Limit</b>	-20 Nm to 20 Nm
<b>Speed Range ( 2 Directions )</b>	5 to 90 rpm
<b>Precision of Torque Measurement</b>	+/- 0.1 Nm
<b>Precision of Angular Measurement</b>	< 1 °
<b>Band-Width</b>	> 1 kHz
<b>Adaptability</b>	Chuck or Square Shaft 3/8"

SDI is a test engineering company offering reliable and innovative solutions in test systems, mechatronics and embedded system.

Our solutions include the provisions of test systems, software and services ranging from your needs' definition to the installation and the analysis of the test's results. We are here to help you conceive products that precisely answer norms, quality and reliability constraints set by your clients. SDI complies with the ISO - 9001 : 2000 norm.

SDI is also committed to sustainable development. The company is an active member of the Environmental Managers Network and has put in place ISO



271, Chaussee Jules Cesar  
95250 BEAUCHAMP  
FRANCE

>> + 33 (0)1 34 18 78 28  
>> info@sdi-tech.com  
www.sdi-tech.com